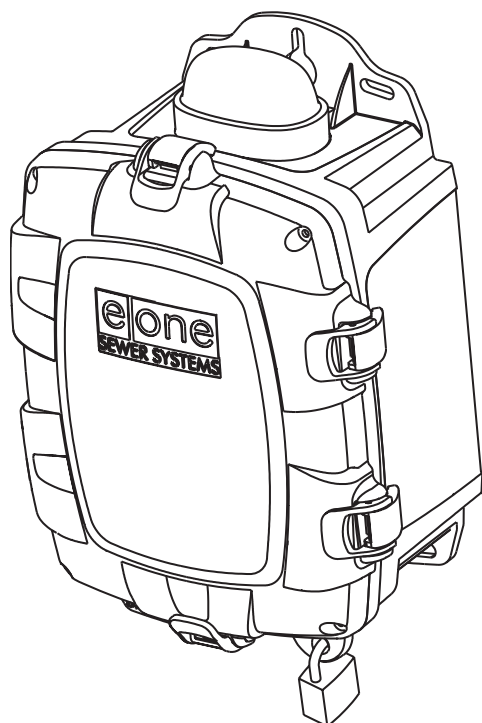


# E/One Sentry™

## ***Alarm Panel — Basic Package***



### **Description**

The E/One Sentry panels are custom designed for use with Environment One grinder pump stations. They can be configured to meet the needs of your application, from basic alarm indication to advanced warning of pending service requirements.

E/One Sentry panels are supplied with audible and visual high level alarms. They are easily installed in accordance with relevant national and local codes. Standard panels are approved by UL, CSA, CE and NSF to ensure high quality and safety.

The panel features a corrosion-proof, NEMA 4X-rated, thermoplastic enclosure. A padlock is provided to prevent unauthorized entry (safety front).

### **Standard Features**

- Circuit breakers, 240 or 120 VAC service
- Terminal blocks and ground lugs
- Audible alarm with manual silence
- Manual run feature and run indicator
- Redundant "Start" function with high level alarm
- Conformal-coated alarm board (both sides)
- Alarm board overload protection

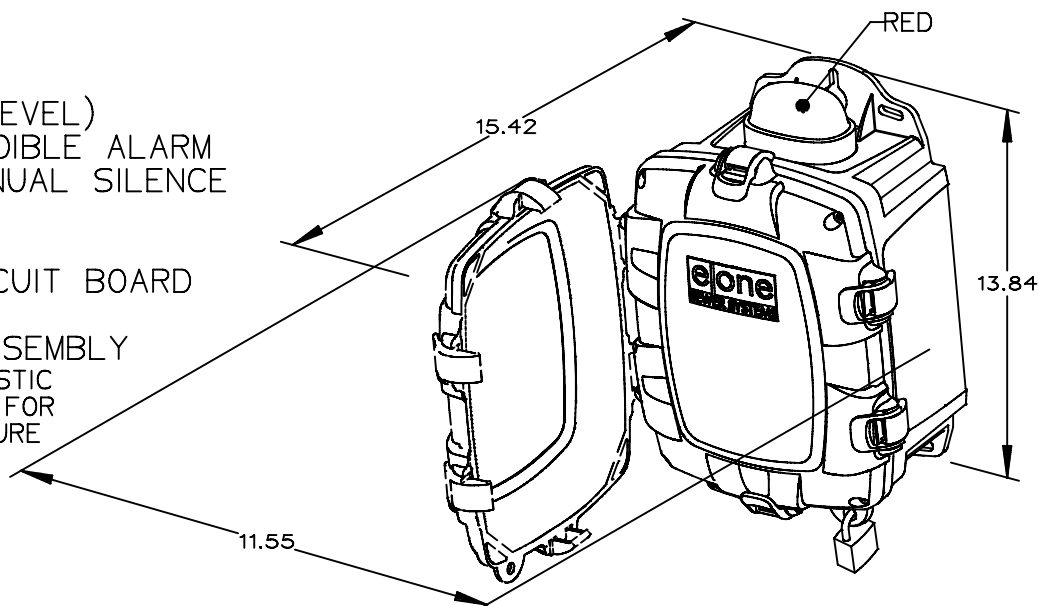
### **Optional Features**

- Contact group (dry, powered and Remote Sentry)
- Inner cover (dead front)
- Hour meter
- Generator receptacle with auto transfer
- GFCI
- Main service disconnect
- Brownout protection

Please consult factory for special applications.

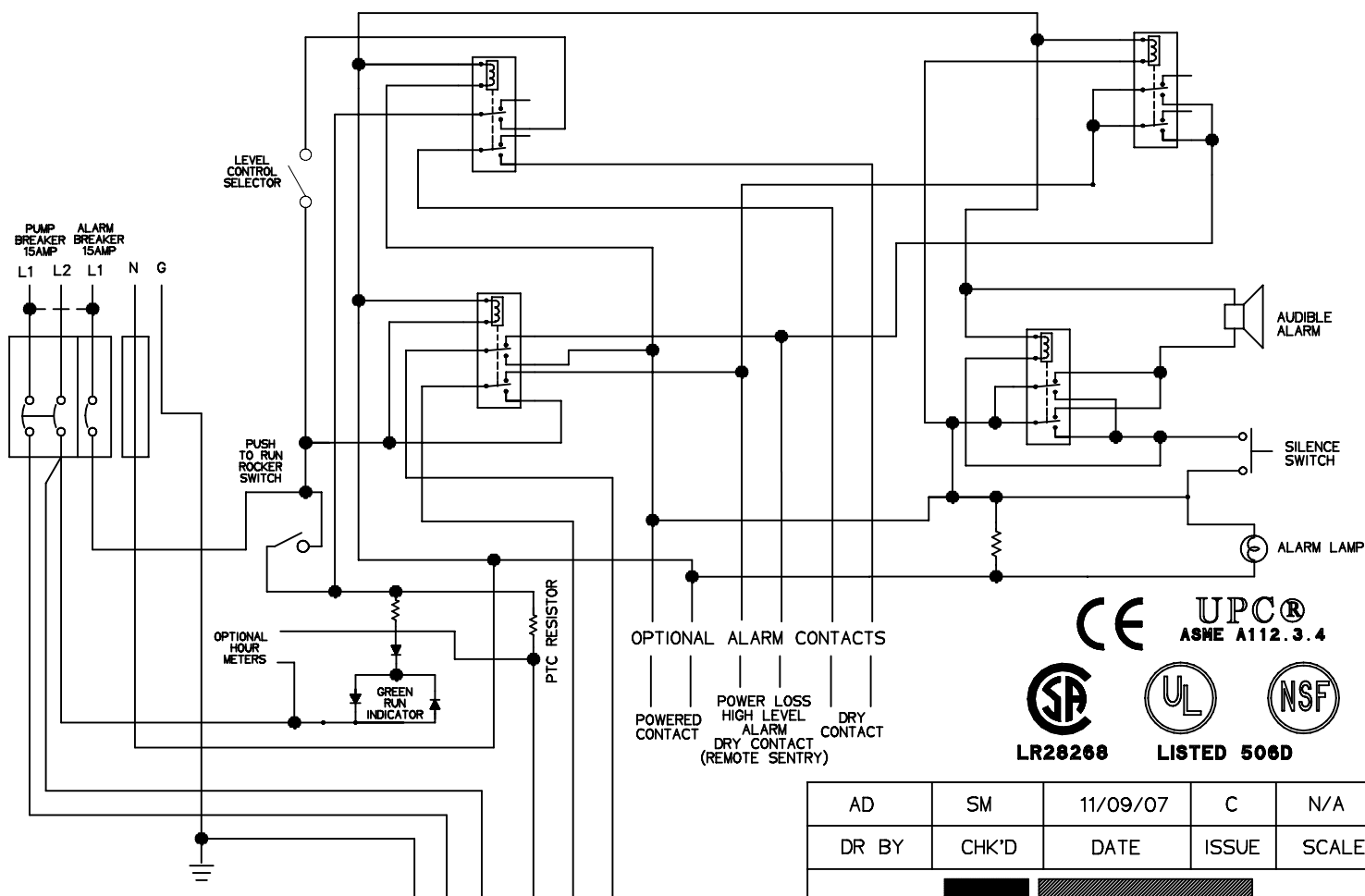
# SIMPLEX SENTRY

REDUNDANT RUN (HIGH LEVEL)  
EXTERNAL VISUAL & AUDIBLE ALARM  
EXTERNAL LATCHING MANUAL SILENCE  
MANUAL RUN  
PUMP RUN INDICATOR  
CONFORMAL COATED CIRCUIT BOARD  
PADLOCK  
NEMA 4X ENCLOSURE ASSEMBLY  
CORROSION PROOF THERMOPLASTIC  
POLYESTER APPROVED BY UL FOR  
ELECTRICAL CONTROL ENCLOSURE



## OPTIONS:

- ☐ ALARM CONTACTS  
☐ HOUR METER



PIN	FUNCTION	2000S	EXTREME
1	MANUAL RUN	RED	BROWN
2	L1	BLACK	RED
3	L2	WHITE	BLACK
4	GND	GREEN	GRN/YEL
5	ALARM FEED	ORANGE	YELLOW
6	ALARM RETURN	BLUE	BLUE

TO PUMP  
GND L1 L2  
PUMP POWER  
MANUAL RUN  
FEED  
RETURN  
ALARM

OPTIONAL ALARM CONTACTS  
POWERED CONTACT  
POWER LOSS  
HIGH LEVEL  
ALARM  
DRY CONTACT  
(REMOTE SENTRY)

CE UPC®  
ASME A112.3.4



LR26268



LISTED 506D



AD	SM	11/09/07	C	N/A
DR BY	CHK'D	DATE	ISSUE	SCALE

**eone**  
SEWER SYSTEMS

SIMPLEX SENTRY, 240V 60Hz.  
DOUBLE POLE POWER

## CONTROL CABLE:

TYPE TC: DIRECT BURIAL, 12AWG,  
SIX CONDUCTOR

LM000326